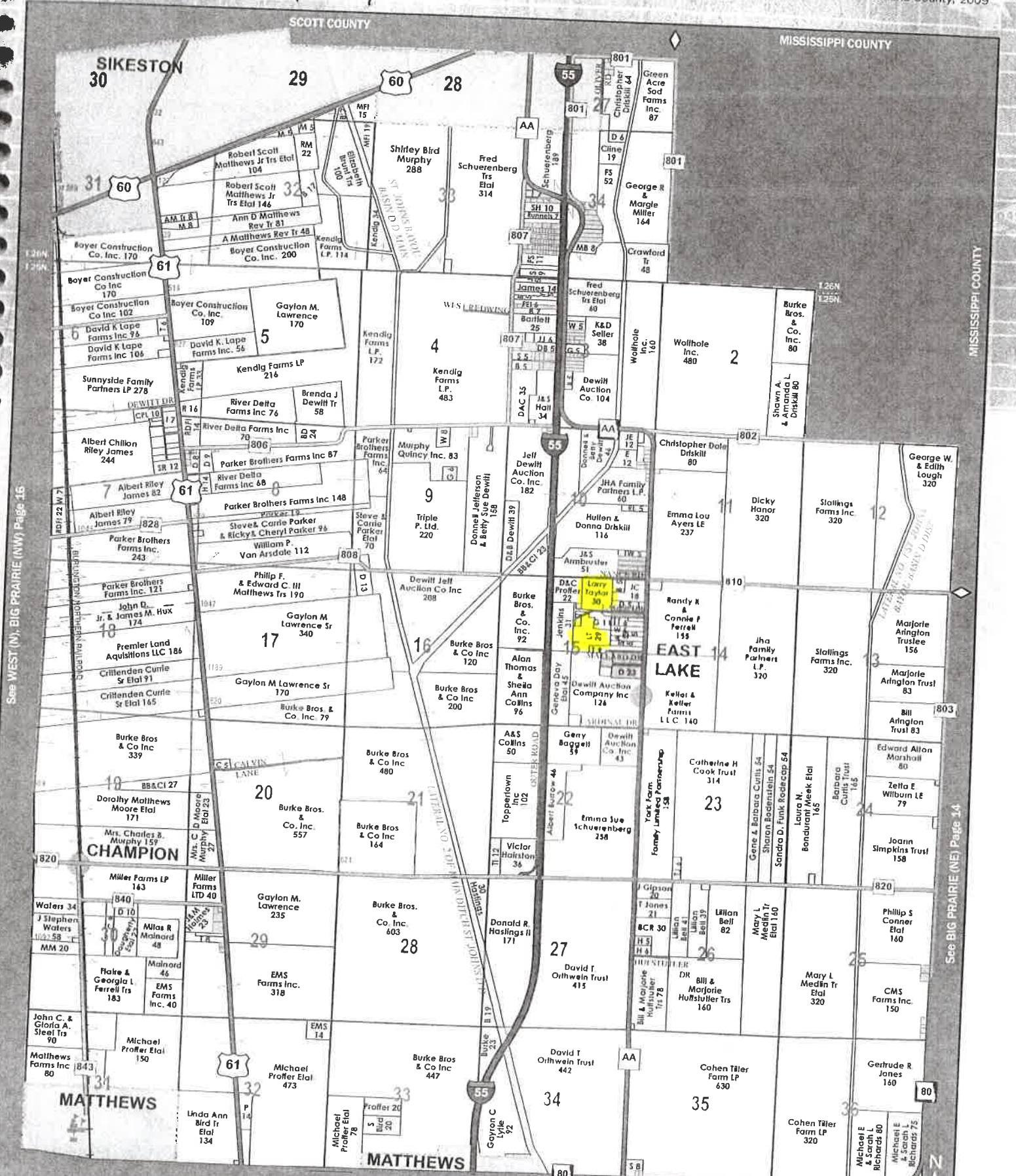




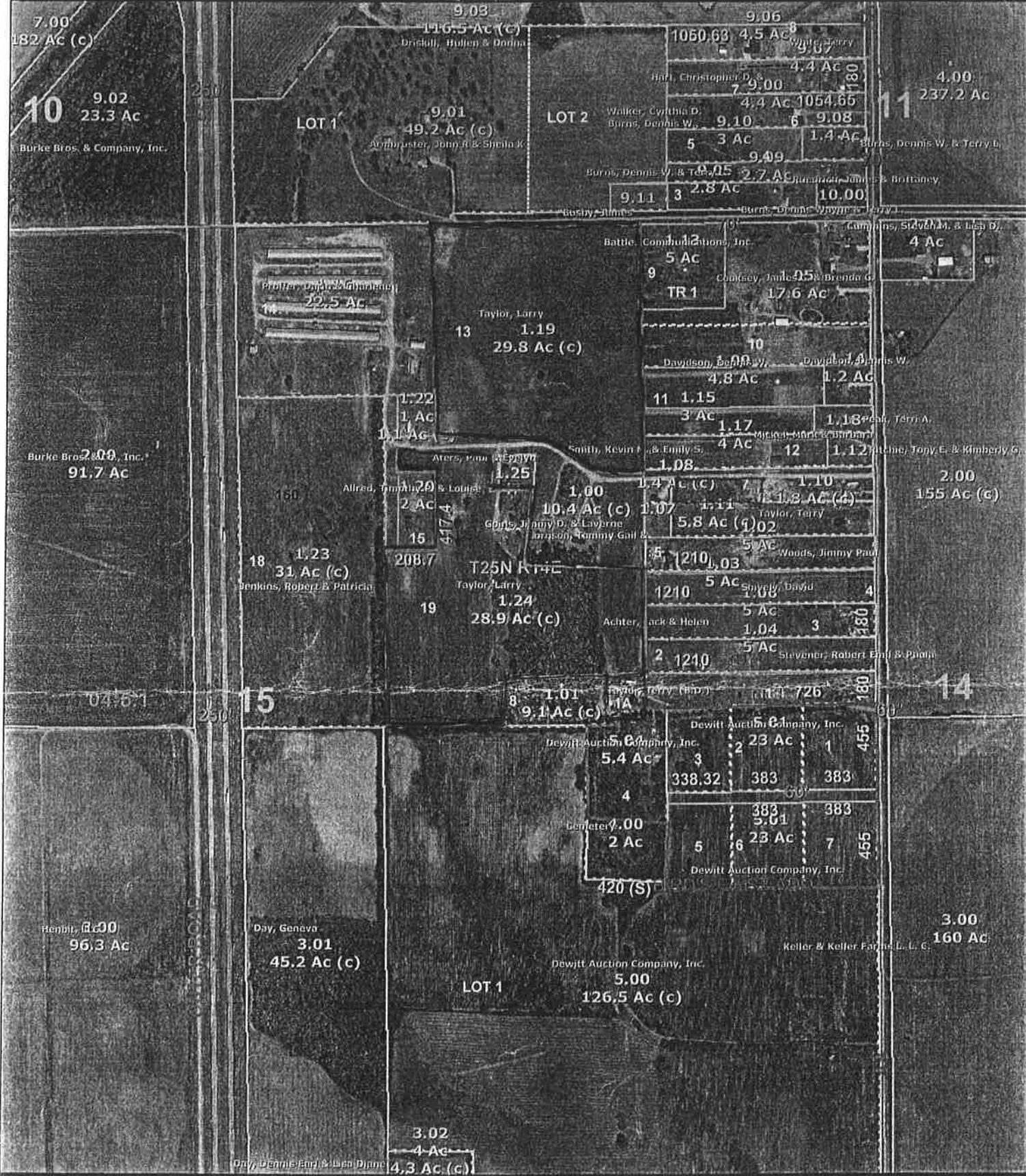
Larry Taylor Jr.

© New Madrid County, 2009



See WEST (N), BIG PRAIRIE (NW) Page 16

See BIG PRAIRIE (NE) Page 14



New Madrid County, Missouri
 Aug 24, 2010

THIS PROPERTY OWNERSHIP MAP IS
 FOR TAX PURPOSES ONLY. IT IS NOT
 INTENDED FOR CONVEYANCES, NOR
 IS IT A LEGAL SURVEY.

GEOGRAPHIC INFORMATION SYSTEM BY
 MIDLAND GIS SOLUTIONS, LLC.

Maintained By:
 C.W. ICE

Prepared For:
 Ronnie Simmons
 New Madrid County Assessor
 450 Main St. Courthouse
 New Madrid, MO 63869

CHICKEN HOUSES

LOT 14
22.46 ACS.

LOT 13

N 88°04'05"E 1038.77'
775.34'

50'
N 1°01'08"W 50'
213.66'
213.43'
LOT 16
1.0 AC.
213.02'
213.83'
S 0°53'22"E
S 0°53'22"E

N 89°11'03"W
301.40'

50'
N 3°41'55"E 143.00'
S 89°11'00"E 529.22'

49.78'
ACCESS ROAD

N 53°20'05"W 293.97'
S 53°20'05"E 173.89'
N 88°19'25"W 240.75'
S 88°19'25"E 255.64'

S 88°58'52"W 208.70'

190.14'
LOT 17
0.74 AC.
170.54'
170.52'

220.30'
S 89°11'32"E

WILLIE EILY
LOT NO. 21
4.74 ACS.

N 1°01'08"W 417.40'

S 0°40'12"E 502.22'

312.47'
S 88°11'32"E 168.37'

S 8°48'11"W 315.44'

S 0°39'59"E 190.14'

28.00'
S 88°11'32"E 168.37'

143.00'

N 9°19'52"E 534.26'

487.84'

N 85°25'44"W 630.84'

R/W LINE

N U 04°38' W
1718.30'

LOT 18
30.62 ACS.

S 0°42'18"E 1736.92'

N 0°42'18"W 923.94'

LOT 19
(28.54 ACS.)

S 89°18'53"W 765.53'

S 0°39'37"E 245.00'

LOT 8
APB 7 PAGE 14

769.00'

590.99'

R/W MARKER

S 89°26'45"W 1359.99'

S 0°35'10"E 1349.76'

S 0°35'10"E 454.78'

S 0°35'10"E 575.42'



GRAPHIC SCALE IN FEET



Tract 1:

A tract of land lying and being situated in the North Half (N1/2) of Section Fifteen (15), Township Twenty-five (25) North, Range Fourteen (14) East, of the Fifth Principal Meridian, New Madrid County, Missouri more fully described by metes and bounds as follows: Beginning at a point on the North line of said Section 15 therein distant South 89 degrees 10 minutes 00 seconds West a distance of 1240.00 feet from the Northeast corner of said Section 15; thence South 0 degrees 35 minutes 10 seconds East a distance of 1349.76 feet to a point; thence North 88 degrees 19 minutes 25 seconds West a distance of 240.75 feet to a point; thence North 53 degrees 19 minutes 37 seconds West a distance of 295.17 feet to a point; thence North 89 degrees 12 minutes 54 seconds West a distance of 621.62 feet to a point; thence North 0 degrees 35 minutes 22 seconds West a distance of 1149.48 feet to a point on the North line of said Section 15; thence North 89 degrees 10 minutes 00 seconds East a distance of 1104.16 feet along said North line to the point of beginning. Known as Lot Thirteen (13)