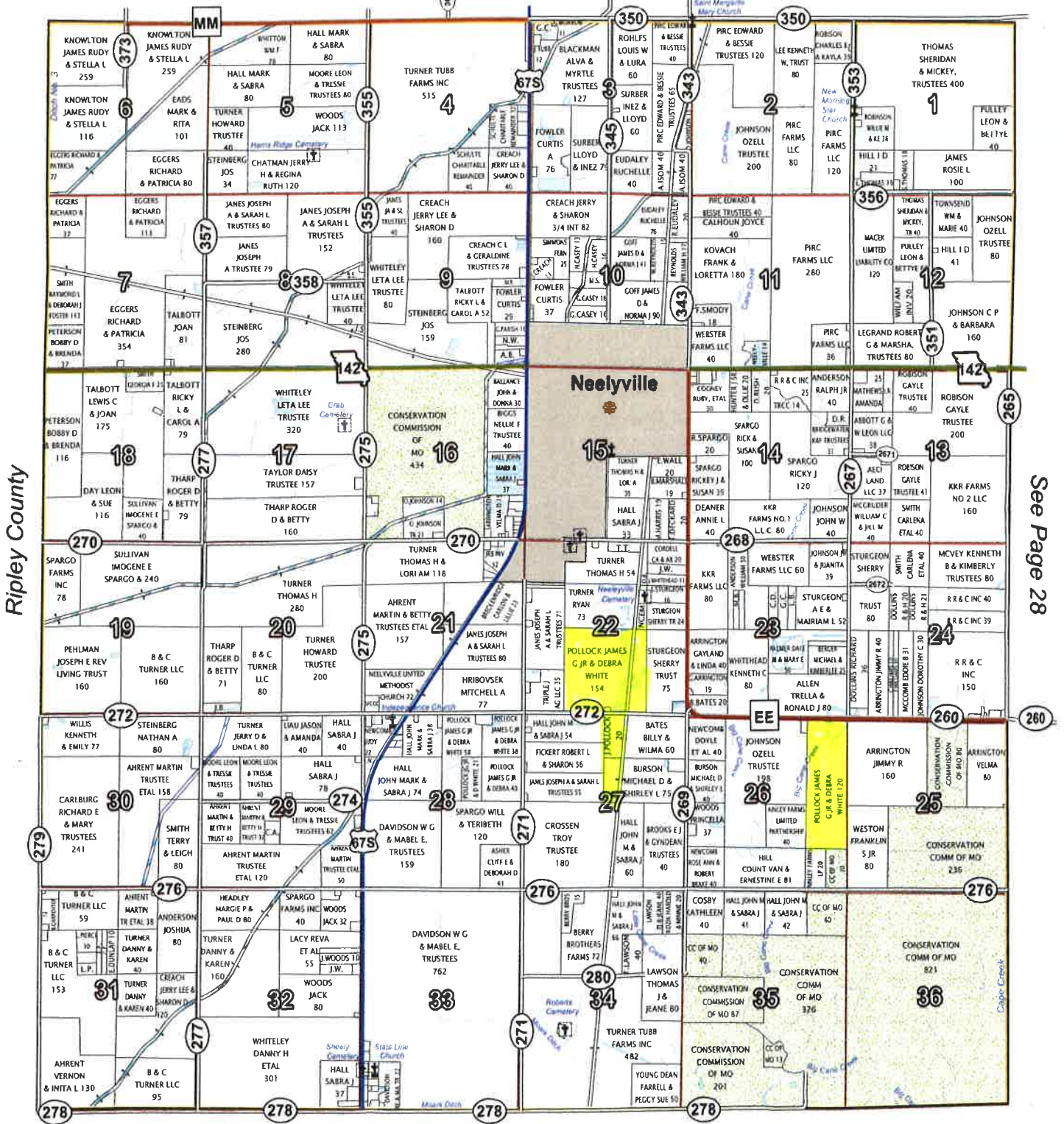


See Page 22



Ripley County

See Page 28

State of Arkansas

T22N--R5E



Missouri
 Butler
 Report ID: FSA-156EZ

U.S. Department of Agriculture
 Farm Service Agency
 Abbreviated 156 Farm Record

FARM: 6799
 Prepared: 8/24/11 11:55 AM
 Crop Year: 2011
 Page: 1 of 1

Operator Name: JAMES POLLOCK JR
 Farm Identifier:
 Recon Number:

Farms Associated with Operator:
 7088

CRP Contract Number(s): None

Farmland	Cropland	DCP Cropland	WBP	WRP/EWP	CRP Cropland	GRP	Farm Status	Number of Tracts
77.0	0.0	0.0	0.0	0.0	0.0	0.0	Active	2
State Conservation	Other Conservation	Effective DCP Cropland	Double Cropped	NAP	MPL/FWP		FAV/WR History	ACRE Election
0.0	0.0	0.0	0.0	0.0	0.0		Y	None

Tract Number: 1053 Description F14 S22/T22N/R5E

FAV/WR History
 Y

BIA Range Unit Number:

HEL Status: Classified as not HEL

Wetland Status: Tract contains a wetland or farmed wetland

WL Violations: None

Farmland	Cropland	DCP Cropland	WBP	WRP/EWP	CRP Cropland	GRP
29.0	0.0	0.0	0.0	0.0	0.0	0.0
State Conservation	Other Conservation	Effective DCP Cropland	Double Cropped	NAP	MPL/FWP	
0.0	0.0	0.0	0.0	0.0	0.0	

Owners: JAMES POLLOCK JR
 DEBRA K POLLOCK

DEBRA WHITE POLLOCK
 WALTER B POLLOCK

Other Producers: None

Tract Number: 9181 Description F14 S22/T22N/R5E

FAV/WR History
 Y

BIA Range Unit Number:

HEL Status: Classified as not HEL

Wetland Status: Tract contains a wetland or farmed wetland

WL Violations: None

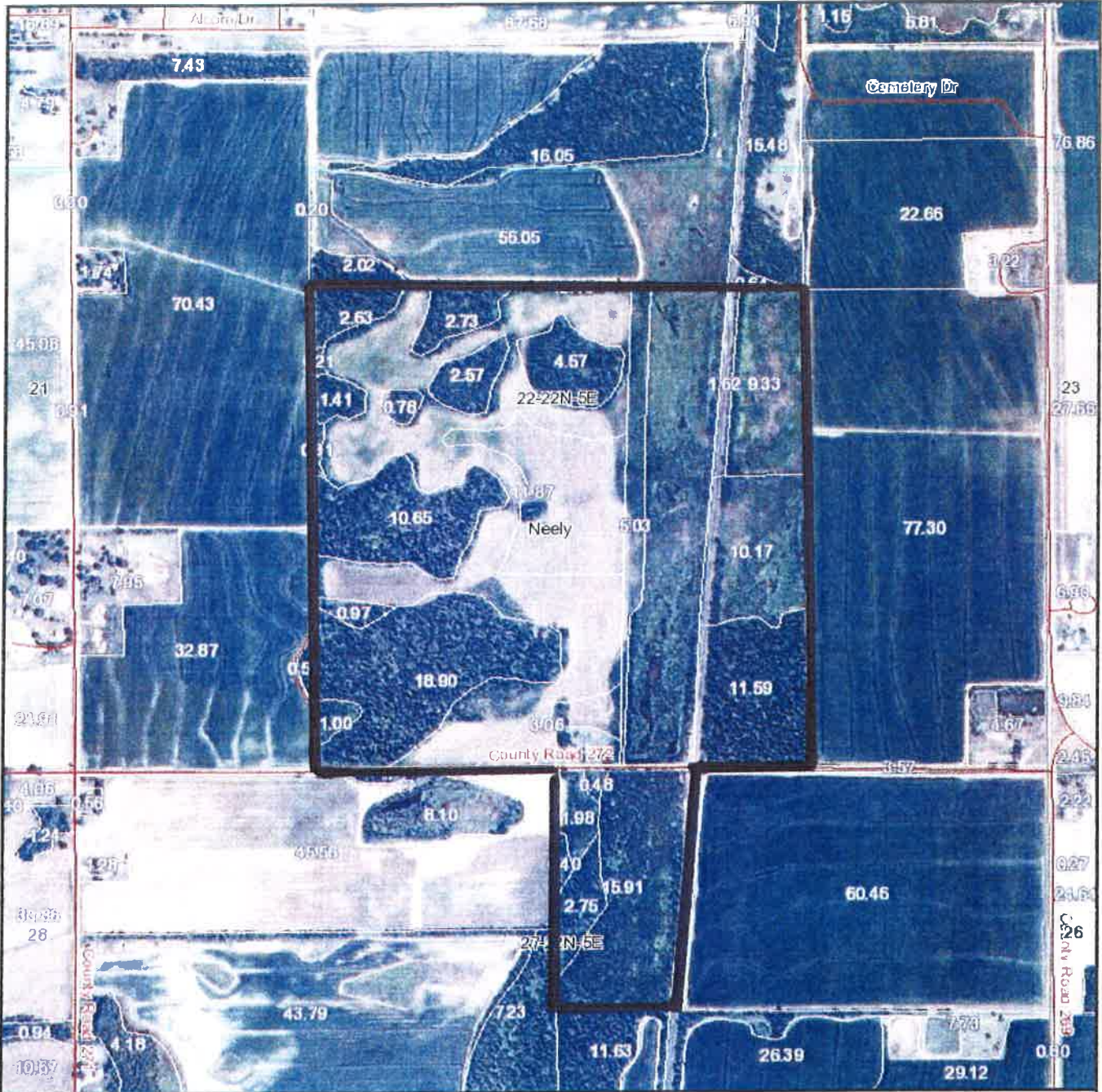
Farmland	Cropland	DCP Cropland	WBP	WRP/EWP	CRP Cropland	GRP
48.0	0.0	0.0	0.0	0.0	0.0	0.0
State Conservation	Other Conservation	Effective DCP Cropland	Double Cropped	NAP	MPL/FWP	
0.0	0.0	0.0	0.0	0.0	0.0	

Owners: JAMES POLLOCK JR
 DEBRA K POLLOCK

DEBRA WHITE POLLOCK
 WALTER B POLLOCK

Other Producers: None

Aerial Map



map center: 36° 32' 7.83, 90° 30' 45.14
 scale: 10499

Maps provided by:

 CUSTOMIZED ONLINE MAPPING
 ©AgriData, Inc. 2011
 www.AgriDataInc.com

22-22N-5E
Butler County
Missouri



8/19/2011

Field borders provided by Farm Service Agency as of 5/21/2008. Aerial photography provided by Aerial Photography Field Office

Missouri
Butler
Report ID: FSA-156EZ

U.S. Department of Agriculture
Farm Service Agency
Abbreviated 156 Farm Record

FARM: 7088
Prepared: 8/24/11 11:55 AM
Crop Year: 2011
Page: 2 of 2

Tract Number: 9180 Description F14 S22/T22N/R5E

FAV/WR
History
Y

BIA Range Unit Number:

HEL Status: Classified as not HEL

Wetland Status: Tract contains a wetland or farmed wetland

WL Violations: None

Farmland	Cropland	DCP Cropland	WBP	WRP/EWP	CRP Cropland	GRP
102.0	57.2	57.2	0.0	0.0	0.0	0.0
State Conservation	Other Conservation	Effective DCP Cropland	Double Cropped	NAP	MPL/FWP	
0.0	0.0	57.2	0.0	0.0	0.0	

Crop	Base Acreage	Direct Yield	CC Yield	CRP Reduction	CRP Pending	CRP Yield	CCC-505 CRP Reduction
GRAIN SORGHUM	52.3	65	65	0.0	0.0	0	0.0
SOYBEANS	4.9	18	18	0.0	0.0	0	0.0
Total Base Acres:	57.2						

Owners: JAMES POLLOCK JR
DEBRA K POLLOCK

DEBRA WHITE POLLOCK
WALTER B POLLOCK

Other Producers: None

Tract Number: 9314 Description E14 S28/T22N/R5E

FAV/WR
History
N

BIA Range Unit Number:

HEL Status: Classified as not HEL

Wetland Status: Tract contains a wetland or farmed wetland

WL Violations: None

Farmland	Cropland	DCP Cropland	WBP	WRP/EWP	CRP Cropland	GRP
160.0	96.5	96.5	0.0	0.0	0.0	0.0
State Conservation	Other Conservation	Effective DCP Cropland	Double Cropped	NAP	MPL/FWP	
0.0	0.0	96.5	35.9	0.0	0.0	

Crop	Base Acreage	Direct Yield	CC Yield	CRP Reduction	CRP Pending	CRP Yield	CCC-505 CRP Reduction
WHEAT	34.5	32	32	0.0	0.0	0	0.0
GRAIN SORGHUM	42.2	65	65	0.0	0.0	0	0.0
SOYBEANS	55.7	18	18	0.0	0.0	0	0.0
Total Base Acres:	132.4						

Owners: JAMES POLLOCK JR
DEBRA K POLLOCK

DEBRA WHITE POLLOCK
WALTER B POLLOCK

Other Producers: None

Missouri
Butler
Report ID: FSA-156EZ

U.S. Department of Agriculture
Farm Service Agency
Abbreviated 156 Farm Record

FARM: 7088
Prepared: 8/24/11 11:55 AM
Crop Year: 2011
Page: 1 of 2

Operator Name: JAMES POLLOCK JR
Farm Identifier:
Recon Number: 2007 29023 26

Farms Associated with Operator:
6799

CRP Contract Number(s): None

Farmland	Cropland	DCP Cropland	WBP	WRP/EWP	CRP Cropland	GRP	Farm Status	Number of Tracts
382.0	220.7	220.7	0.0	0.0	0.0	0.0	Active	3
State Conservation	Other Conservation	Effective DCP Cropland	Double Cropped	NAP	MPL/FWP		FAV/WR History	ACRE Election
0.0	0.0	220.7	42.4	0.0	0.0		Y	None

Crop	Base Acreage	CRP Reduction	CRP Pending	Direct Yield	CC Yield	CCC-505 CRP Reduction
WHEAT	41.0	0.0	0.0	33	33	0.0
GRAIN SORGHUM	94.5	0.0	0.0	65	65	0.0
SOYBEANS	97.7	0.0	0.0	18	18	0.0
RICE-LONG GRAIN	22.2	0.0	0.0	4635	4635	0.0
Total Base Acres:	255.4					

Tract Number: 1080 Description: G14 S26/T22N/R5E FAV/WR History: N
 BIA Range Unit Number:
 HEL Status: Classified as not HEL
 Wetland Status: Tract contains a wetland or farmed wetland
 WL Violations: None

Farmland	Cropland	DCP Cropland	WBP	WRP/EWP	CRP Cropland	GRP
120.0	67.0	67.0	0.0	0.0	0.0	0.0
State Conservation	Other Conservation	Effective DCP Cropland	Double Cropped	NAP	MPL/FWP	
0.0	0.0	67.0	6.5	0.0	0.0	

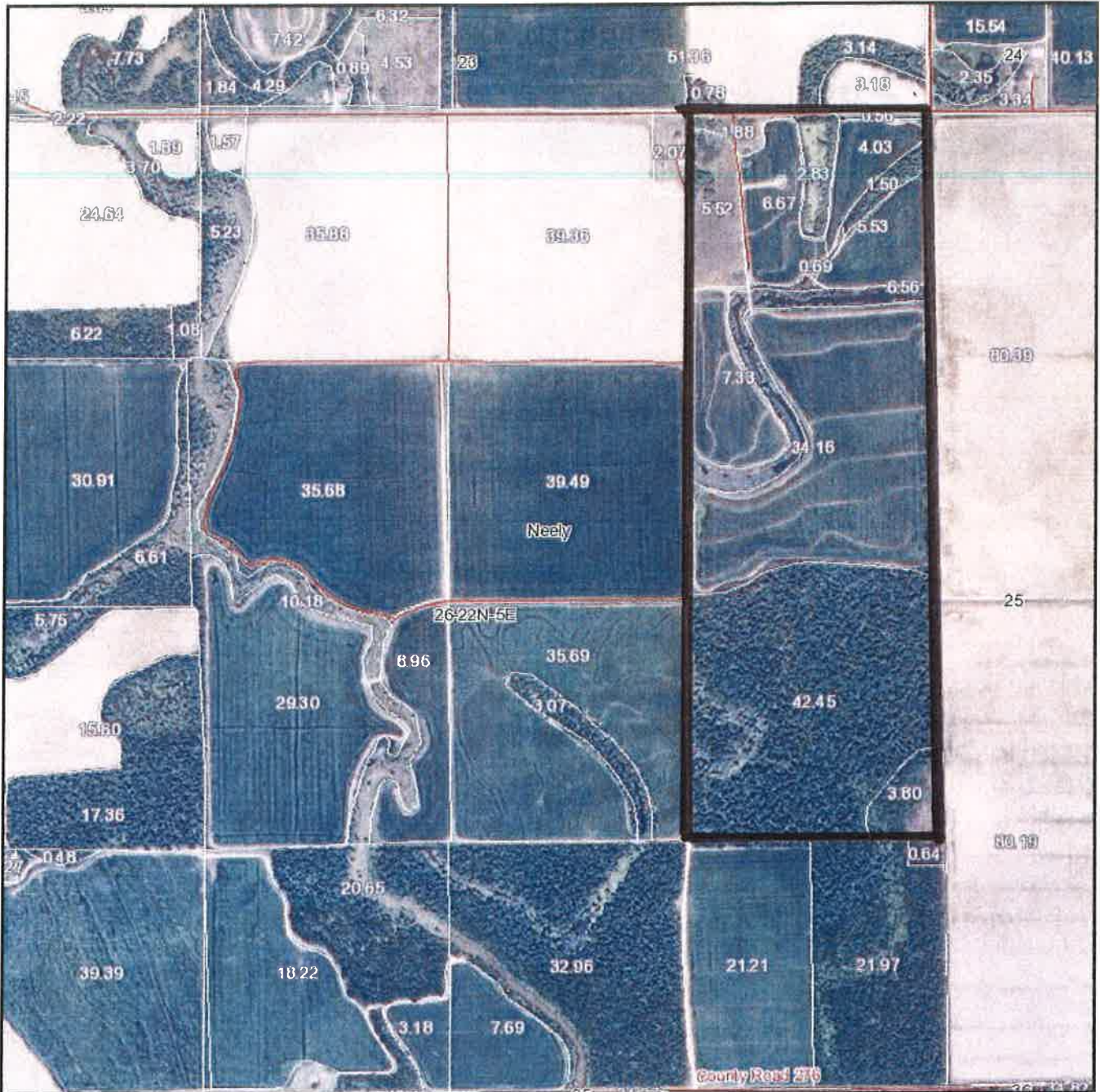
Crop	Base Acreage	Direct Yield	CC Yield	CRP Reduction	CRP Pending	CRP Yield	CCC-505 CRP Reduction
WHEAT	6.5	38	38	0.0	0.0	0	0.0
RICE-LONG GRAIN	22.2	4635	4635	0.0	0.0	0	0.0
SOYBEANS	37.1	18	18	0.0	0.0	0	0.0
Total Base Acres:	65.8						

Owners: JAMES POLLOCK JR
DEBRA K POLLOCK

DEBRA WHITE POLLOCK
WALTER B POLLOCK

Other Producers: None

Aerial Map



Farm 7088
Tract 1080

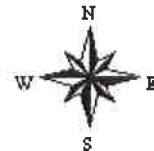
map center: 36° 31' 30.34, 90° 29' 32.81
 scale: 10322

Maps provided by:



©AgriData, Inc. 2011
 www.AgriDataInc.com

26-22N-5E
Butler County
Missouri



8/19/2011

Field borders provided by Farm Service Agency as of 5/21/2008. Aerial photography provided by Aerial Photography Field Office.